

Date of Examination



No of Questions	
No. of Pages	

GENERAL SIR JOHN KOTELAWALA DEFENCE UNIVERSITY
SELECTION TEST FOR THE ENROLLMENT OF DAY SCHOLARS – INTAKE 39
Intelligence Quotient
(MODEL PAPER)

Call up No:-

Duration:

NIC No:-

General Instructions:

Answer ***all questions.***

02 mark for each correct answer (No minus marks)

1. If A = 2, B = 5, C = 3 and D = 10, calculate the following:

$$\frac{C \times D - B \times C}{A + C}$$

- a. 1
 - b. 2
 - c. 3
 - d. 5
2. A boy is four years old, and his sister is three times as old as he is. When the boy is 12 years old, how old will his sister be?
- a. 19
 - b. 20
 - c. 21
 - d. 36
3. Cube is related to Square in the same way as Square is related to?
- a. Point
 - b. Triangle
 - c. Plane
 - d. Line
4. What number comes next in this sequence?

25, 32, 27, 36, ?

- a. 45
- b. 27
- c. 35
- d. 26

5. SUNDAY, MONDAY, WEDNESDAY, SATURDAY, WEDNESDAY Which day comes next?

- a. SATURDAY
- b. MONDAY
- c. SUNDAY
- d. TUESDAY

6. The average of three numbers is 26. The average of two of these numbers is 34. What is the third number?

- a. 68
- b. 78
- c. 10
- d. 5

7. A film production company must submit 5 of its movies released this year for consideration for an awards ceremony. This year, the company released 14 movies; 8 of these were horror movies and 6 were romantic comedies. If it submits at least 3 romantic comedies, how many groups of 5 movies can be submitted?

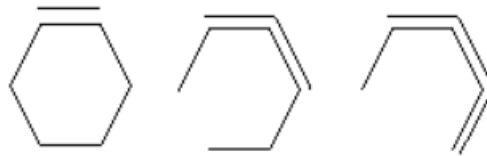
- a. 276
- b. 432
- c. 560
- d. 686

8. If the average of three numbers is $5a - 2$ and the average of two of the numbers is $4a + 2b + 1$, which of the following is the other number in terms of a and b ?

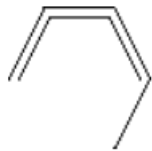
- a. $a - 2b - 3$
- b. $5a + 2b + 3$
- c. $7a - 4b - 8$
- d. $11a - 2b - 5$

9. David and George had 170 between them; however, George had one and a half times as many as David. How many did each have?
- David 102, George 68
 - David 78, George 102
 - David 68, George 102
 - David 102, George 78

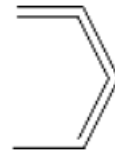
10. What comes next in the following pattern?



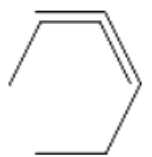
a.



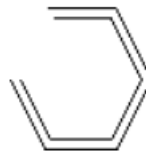
b.



c.



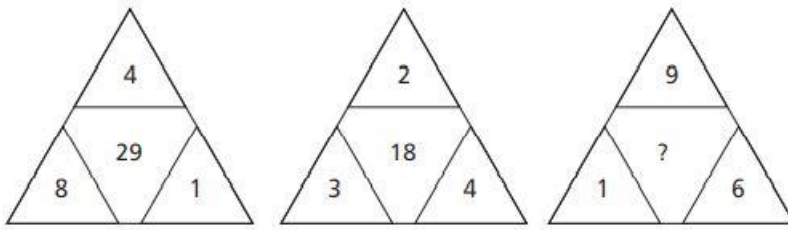
d.



11. If you rearrange the letters of "haret", you would have the name of a:
- Fish
 - River
 - Planet
 - Ventricle

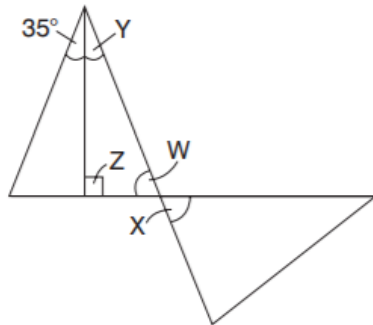
12. A girl is facing west before blindfolded. She is spun 180 degrees to the right, then 630 degrees to the left. In what direction is she now facing?
- North
 - East
 - South
 - West

13. What number should replace the question mark?



- a. 31
- b. 34
- c. 14
- d. 15

14. What is the value of angle X?



- a. 55°
- b. 60°
- c. 70°
- d. 90°

15. What number should replace the question mark?

$$926 : 24$$

$$799 : 72$$

$$956 : ?$$

- a. 20
- b. 59
- c. 51
- d. 48

16. A is the brother-in-law of X who has a sister Y. Y's nephew P's father is married to X. How is A related to P?
- Brother-in-law
 - Uncle
 - Brother
 - Nephew
17. In each of the following, identify two words (one from each set of brackets) that form a connection, when paired with the words
TRAVEL (journey, map, list)
ATTEND (meeting, programme, boardroom)
- map, meeting
 - list, programme
 - journey, meeting
 - journey, boardroom
18. A jet was detected on the Radar flying 12 Km in 30 seconds, what is the estimated speed per hour?
- 1440 Km/h
 - 1240 Km/h
 - 1340 Km/h
 - 1420 Km/h
19. What should come next in the following number sequence?
 $\frac{3}{5}, \frac{9}{10}, \frac{17}{13}, \frac{17}{24}, ?$
- $\frac{31}{21}$
 - $\frac{17}{23}$
 - $\frac{26}{27}$
 - $\frac{23}{24}$

20. A grocer ordered 54 items of fruit consisting of grapes, apples and oranges in the ratio of 1 : 3 : 2 respectively. How many of each item did he order?
- a. 27 grapes, 9 apples, 18 oranges
 - b. 9 apples, 18 grapes, 27 oranges
 - c. 18 grapes, 9 oranges, 27 apples
 - d. 9 grapes, 27 apples, 18 oranges

---END OF THE PAPER---

SAMPLE IQ PAPER